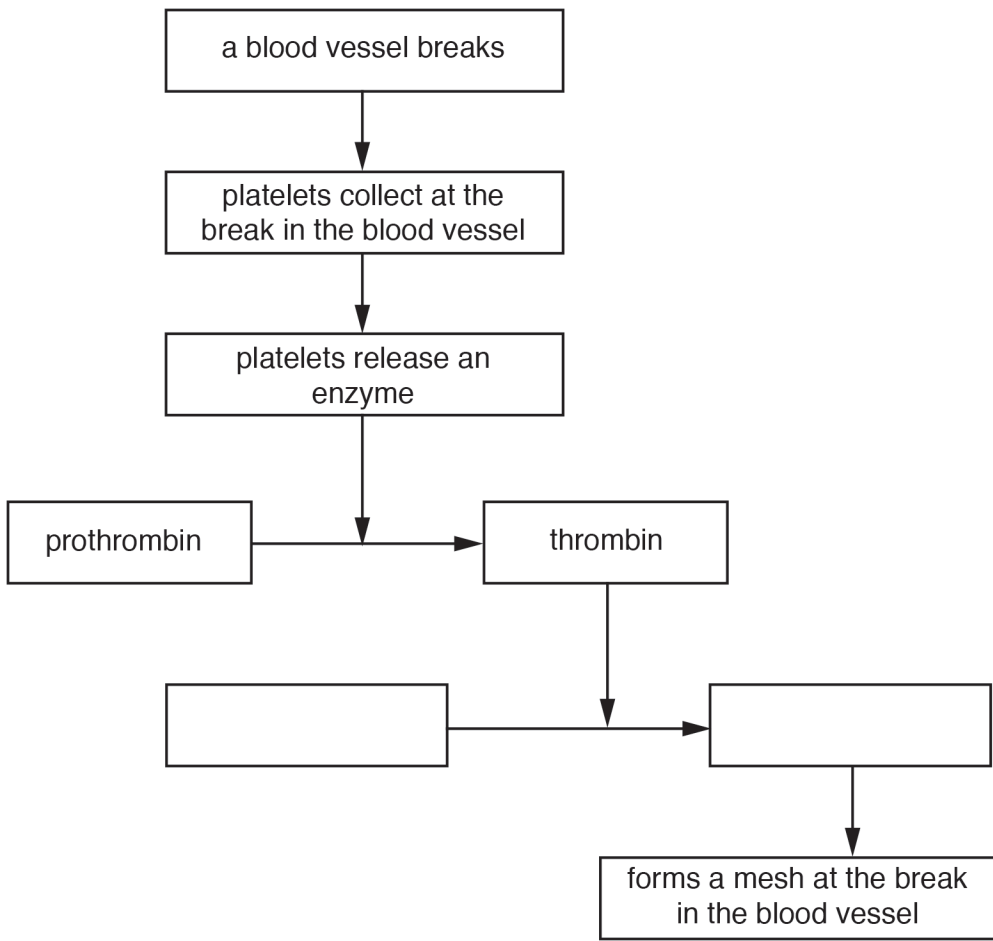


1 The diagram below shows some of the stages of blood clotting.



Complete the diagram by filling in the **two** empty boxes.

[1]

[Total: 1]

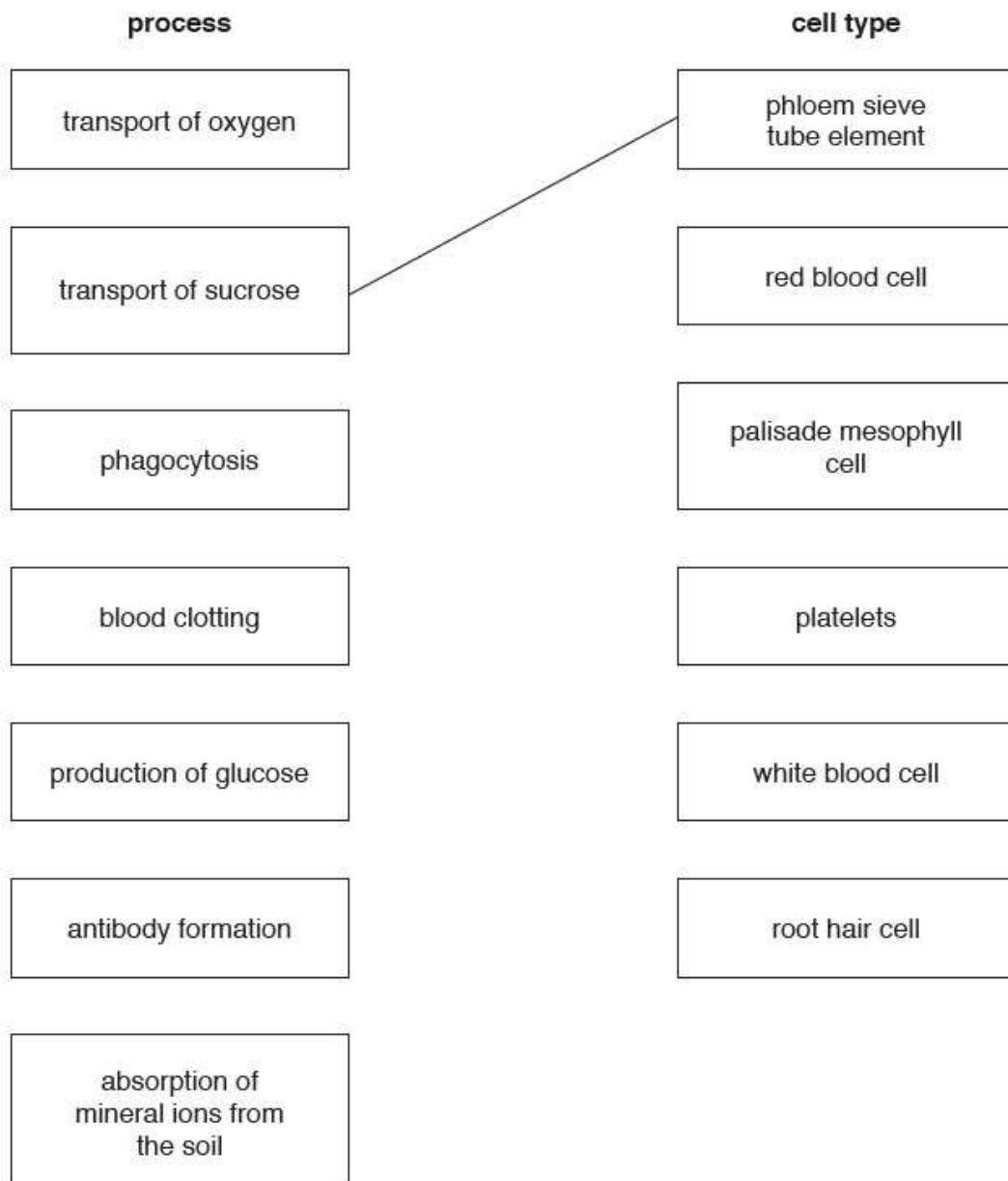
2 The boxes on the left describe processes carried out by cells.

The boxes on the right contain the names of the cells that carry out these processes.

Draw **one** straight line from each box on the left to a box on the right to link the process to the cell type.

Draw **six** lines.

An example has been done for you.



[6]

[Total: 6]

3 Kidneys excrete urea.

State how urea travels to the kidney.

.....

.....

..... [1]

[Total: 1]

4 The table below compares the amounts of four different substances in blood plasma and urine.

substance	quantity / percentage per 100 cm ³ of fluid	
	blood plasma	urine
water	91.50	95.50
urea	0.03	2.10
glucose	0.10	0.00
salts	0.41	0.61

Use the information in the table to describe how blood plasma differs from urine.

.....

.....

.....

.....

.....

.....

.....

..... [3]

[Total: 3]

- 5 Blood is made up of four major components. Two of these components are plasma and red blood cells.

Name the **two** other major components of blood and state their function.

name.....

function.....

.....

name.....

function.....

..... [4]

[Total: 4]