

Science - Year 2

Living Things and their Habitats – Block 2LvH

Gardens and Allotments

Session 3

Resource Pack

Visiting a Farm

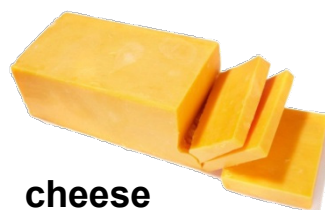
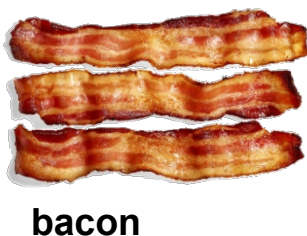
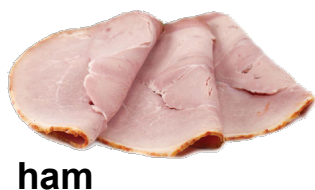
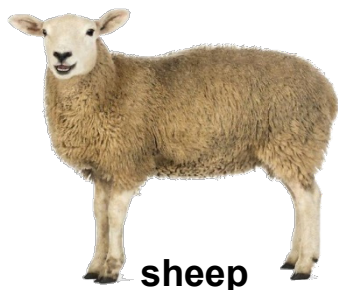
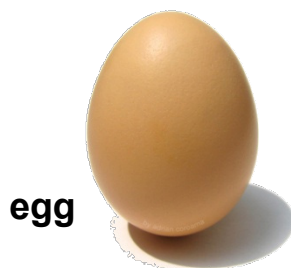
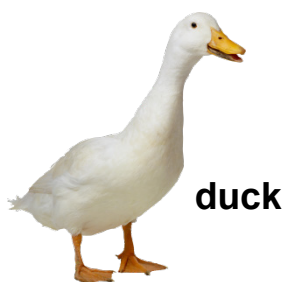
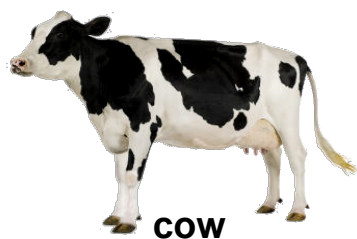
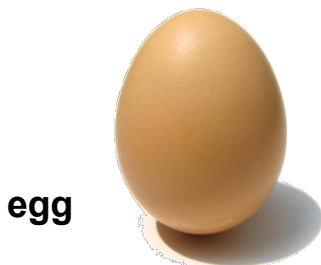
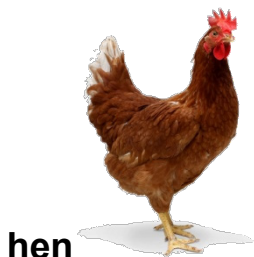
Tips for Teachers



1. A day or two before, check the transport arrangements, ask the farm about any last minute changes, and prepare everything you need for the day such as worksheets, clipboards, first aid kit, contact details for all the children, spare wellies, risk assessment, etc.
2. On arrival, check any last minute changes with the farmer, and confirm contact phone numbers and emergency procedures. Together with the farmer remind the children about behaviour, safety and hygiene rules for the day.
3. Although the farm should have contingency plans for wet weather, have a few indoor activities prepared just in case. Some short activities can also be useful to fill unexpected gaps such as when one group has to wait for another.
4. Don't worry if everything does not go entirely to plan, it's all a learning experience for the children. Make sure you let the farmer know how the day went for you and return their evaluation form if they provide one.
5. As soon as you can, review your objectives, decide what worked well and what you might do differently another time. Think how you can make the most of the visit for future learning.
6. Farmers love to have feedback from visitors. Letters, pictures or photographs encourage them to go on offering visits, and can be displayed at the farm or on their website.
7. Keep in touch with the farmer and they may send you updates of how animals and crops are progressing, or might be willing to visit the school to talk more about the farm.

Matching Game

Cut these out and ask children to match the animals with the produce



Match the Food Chain Game

Cut these out, jumble them up and ask children to put them in order.

Ask the children to explain why they have chosen the order.

For example, what are the different useful products of a sheep? Or a cow?

