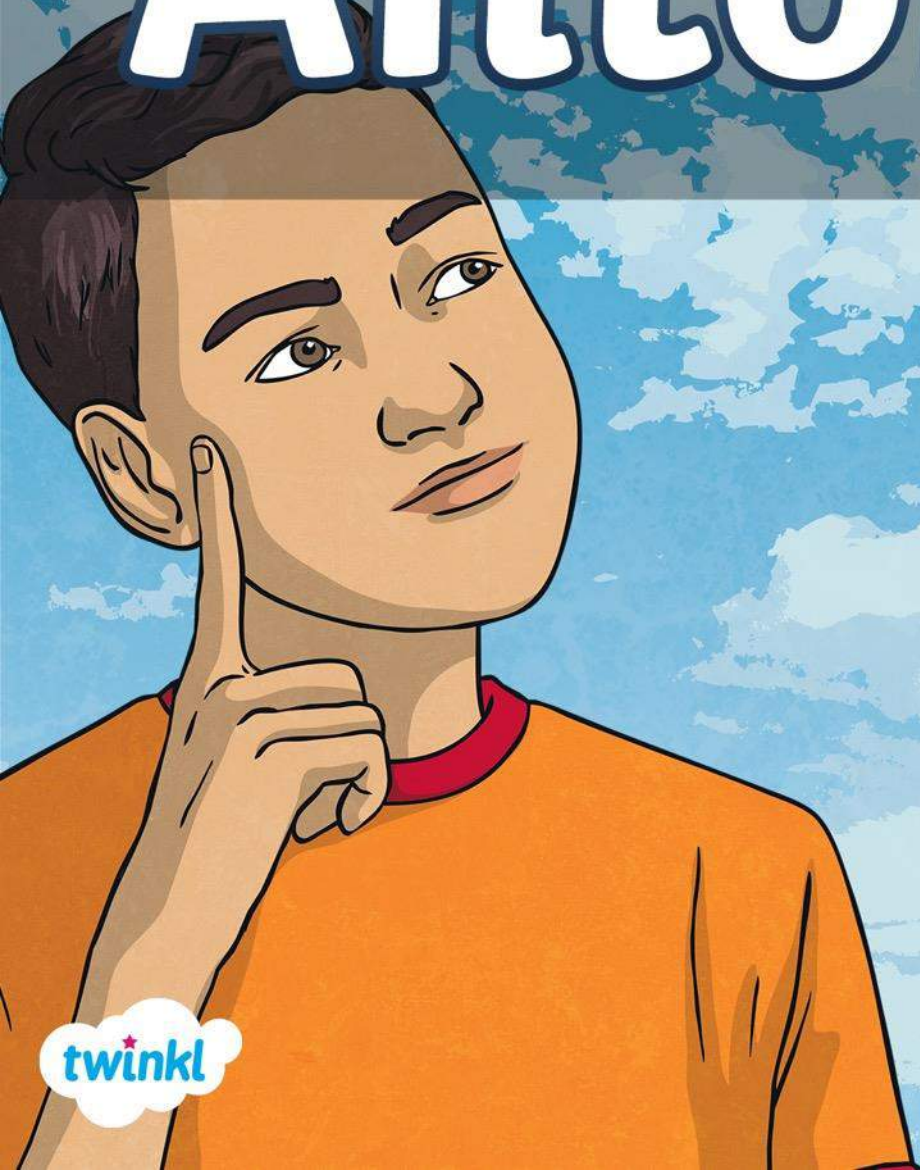


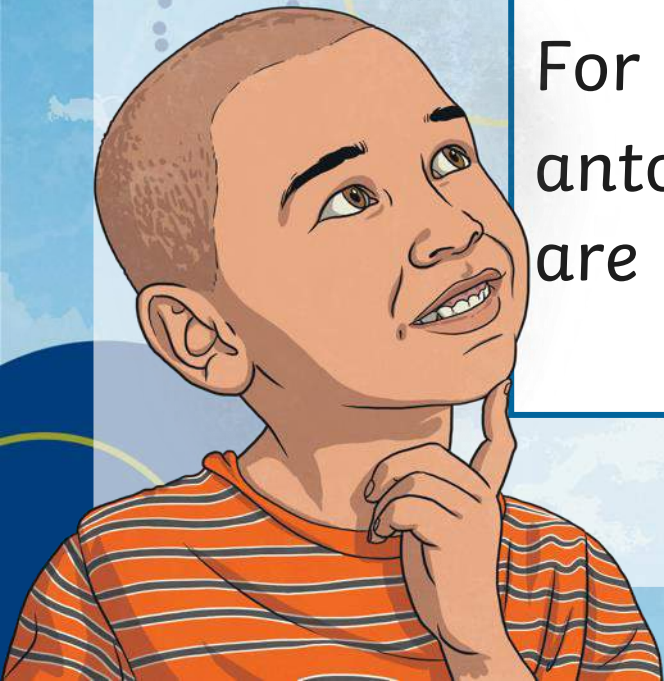
# Antonyms



# What Are Antonyms?

Antonyms are words that have opposite meanings.

For example, **hot** and **cold** are antonyms because their meanings are opposite.



# What Are Antonyms?

Check out this list of antonyms:

fast

happy

big

thick

sink

awake

slow

sad

full

thin

float

asleep

empty

small

day

night

# Your Turn!

Can you think of an antonym for each of these words?

- attack
- boring
- careful
- complicated
- difficult
- give

- huge
- lovely
- native
- reduce
- safe
- true



# Using Antonyms

Antonyms can be used in your writing to help develop cohesion, clarify meaning and add detail.

Read through the examples over the next few slides and discuss how the antonyms have been used.

# Using Antonyms - Example

The sky was clear and **bright** to the **north**, but as I looked to the **south** there seemed to be only **dark** and gloomy rain clouds on the horizon.

**Think About:** How does the use of antonyms help to make the writing feel cohesive?

# Using Antonyms - Example

She looked **afraid** as she stood at the mouth of the dragon's cave, staring into the blackness.

She looked **brave** as she stood at the mouth of the dragon's cave, staring into the blackness.

**Think About:** How does the meaning of the sentence change with the use of different antonyms?

# Using Antonyms - Example

We were so **close** to reaching the peak of the mountain but still so **far** behind the other teams that it hardly felt like an achievement at all.

**Think About:** How does the use of antonyms in this sentence add detail and clarify what is happening?



# Your Turn!

Have a go at using the antonyms **sweet** and **bitter** to write a detailed, cohesive sentence or two opposing sentences.

Good luck!

