

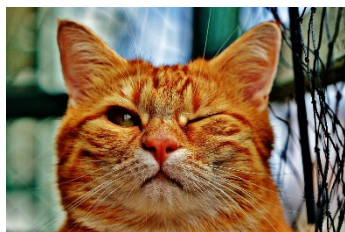
What is this picture showing?



Unit 3 Day 1

Reference Text 1

FACEBOOK Home Profile Friends Inbox



About:
I like cats, cake, music and going to the cinema with my friends.

Emma Wellerby

Wall

Info

Photos

Discussion



Emma Wellerby



Had a fab time yesterday. Soo tired now after the long run and lots of paint!!! I shall go again.

About an hour ago

like share comment



Yumi Kita

Here – look at this! Typical boys. They should definitely keep ALL teenage boys off that beach!

Two hours ago

like share comment

Create an Ad

Great Cakes

x



For all your baking needs, choose Great Cakes. You must [click now!](#)

Fat Cats

x



Your cat will miaw with delight when you open a box of [Fat Cats](#) – the perfect food for fat cats.

Yumi Kita shared Ahmed is Great's post 28th June



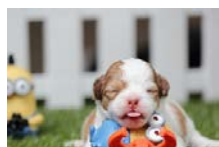
Pranksters spoilt a beachside wedding in LA yesterday when they froze the wedding party's cars! The bride, groom and guests were unable to open any doors or even find the handles! The bride was heartbroken and blamed local teens who had been

seen acting suspiciously earlier that day. Police believe that the mischief-makers used a hose and cooling equipment stolen from a local science laboratory...[Click here](#) to read more.



Emma Wellerby

Cute puppeeeee!!! This might make you smile.



Yesterday

like share comment



Cillian Sahan and 2 others like this.

Unit 3 Day 1

Reference Text 2



[Home](#) [Profile](#) [Find](#) [People](#) [Settings](#) [Help](#) [Sign out](#)



MaxOMan

Photographer, design-connoisseur, gastro-tourist, guitar-legend, coffee-enthusiast, athlete, Strictly-follower.

Joined March 2015

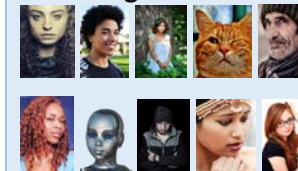
Name: Max Ohashi
Location: Manchester

407
Followers: **82**
Following:

Trends

#ice-crime
#crisp scandal
#picture of the week
Skype
Hilarious cats2
#coffehits

Following



TWEETS

@MaxOMan Hey all. U must look at this. A friend took this film set pic. Amazing effects! The whole street was frozen solid. I can't wait for film.



Less than a minute ago from the web

RETWEET

Unit 3 Day 1

When **ice attacks**

Forget the **thunderous roars** of a violent storm: a less dramatic storm produces the most **spectacular** scenes. **Ice storms** happen when **supercooled rain** freezes as it hits the ground, transforming the landscape into a **frozen fairytale world**.

This storm only lasted five minutes, but it was enough to turn cars and trees into ice statues.

STORM DAMAGE



The crust of frozen rain that coats everything after an ice storm can be so thick and heavy that it makes structures like these electricity pylons collapse.

FAST FACTS

**Rain**

When frozen precipitation passes through warm air, it melts and falls to the ground as rain.

Freezing rain

If frozen precipitation melts in warm air, but cools rapidly as it nears the ground, it freezes on contact.

Sleet

If frozen precipitation thaws in shallow warm air, it re-freezes as sleet before it hits the ground.

Snow

When frozen precipitation falls through cold air, it reaches the surface as snow.



Icicles dangling from these tree branches follow the direction of the wind blowing in from Lake Geneva.

Roads and pavements become a treacherous ice rink.

Ice storms are rare events that occur when rain falls through warm air and meets cold air near the ground. The rain freezes on impact, covering everything in a thick, frosty coating. Switzerland's Lake Geneva experienced this ice storm in 2012.

From **Strange but True**, written by Andrea Mills. Fact Checked & proofread by Hazel Beynon. Publisher: Andrew Macintyre. Senior Editor: Victoria Pyke, Editor: Jenny Sich

Unit 3 Day 1



HOME

ABOUT US

GALLERY

SPONSOR

CONTACT US

Scam of the Week!!!!

Our scam of the week must to go to a **really nasty** trick which should make the villains thoroughly ashamed.

We first heard about the latest car crime happening in US cities and now we have got photographic evidence to prove it!

Thieves have used devices to make an icy layer over unsuspecting victims' cars. When the helpless victim tries to put their key in the door it freezes in the lock. While the poor owner goes to seek help, the evil crooks melt the ice and drive away scot-free. Something ought to be done now. What have the police being doing about this scandal??? This is a real crime and might be coming to you!!!! Will you be next? Don't be fooled! You must take action.

**Crisp Scandal!!**

Their cunning plot to make YOUR crisps less crispy. [Read more.](#)

This may be the First UK Sighting of Bigfoot?

[Read more.](#)

Unit 3 Day 1

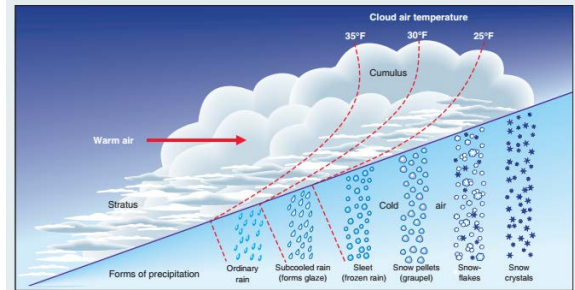
Reference Text 5

Adapted from:

Trees and Ice Storms: The Development of Ice Storm-Resistant Urban Tree Populations

Ice storms, also referred to as glaze storms, cause considerable damage every year to trees in urban and natural areas within the United States. They vary considerably in their severity and frequency and are one of the most devastating winter weather events. Glazed roads and pathways, fallen power lines, power outages, and falling trees and branches result in deaths and injuries to people.

Figure 1 Forms of precipitation that result when a winter warm front slowly advances into ground layer air at or below 0°C (from Lemon, 1961).



The U.S. National Weather Service defines ice storms as the accumulation of at least 0.6cm of ice on exposed surfaces. The ice formation process is influenced by general weather patterns. Typically ice storms can develop when a moist winter warm front passes over a colder surface-air layer (Figure 1). Rain falls from a warmer layer (above 0°C) through layers of cooler air (below 0°C) without freezing, becoming super-cooled. Ice accumulates when super-cooled rain freezes on contact with surfaces that are at or below the freezing point (0°C). Most ice storms last only a few hours, but they may occur over several days depending on weather pattern.



Figure 2 In Feb. 2012, strong winds blew down from the Western Swiss plateau to the basin of Lake Geneva. The wind reached force 6 with gusts of up to 80 km/h. Combined with air temperatures of -15 degree Celsius and the lake water close to freezing, the spray of the waves turned instantly into ice, before even hitting the shore or any object close by. Ice-covered cars parked near the waterfront quickly made headlines in the world press.

Written by Richard J. Hauer, Jeffrey O. Dawson, and Les P. Werner, 2006.
Published by College of Natural Resources, University of Wisconsin-Stevens Point.
Technical Editors: Hilary Holbrook, Kay Strader

Unit 3 Day 1