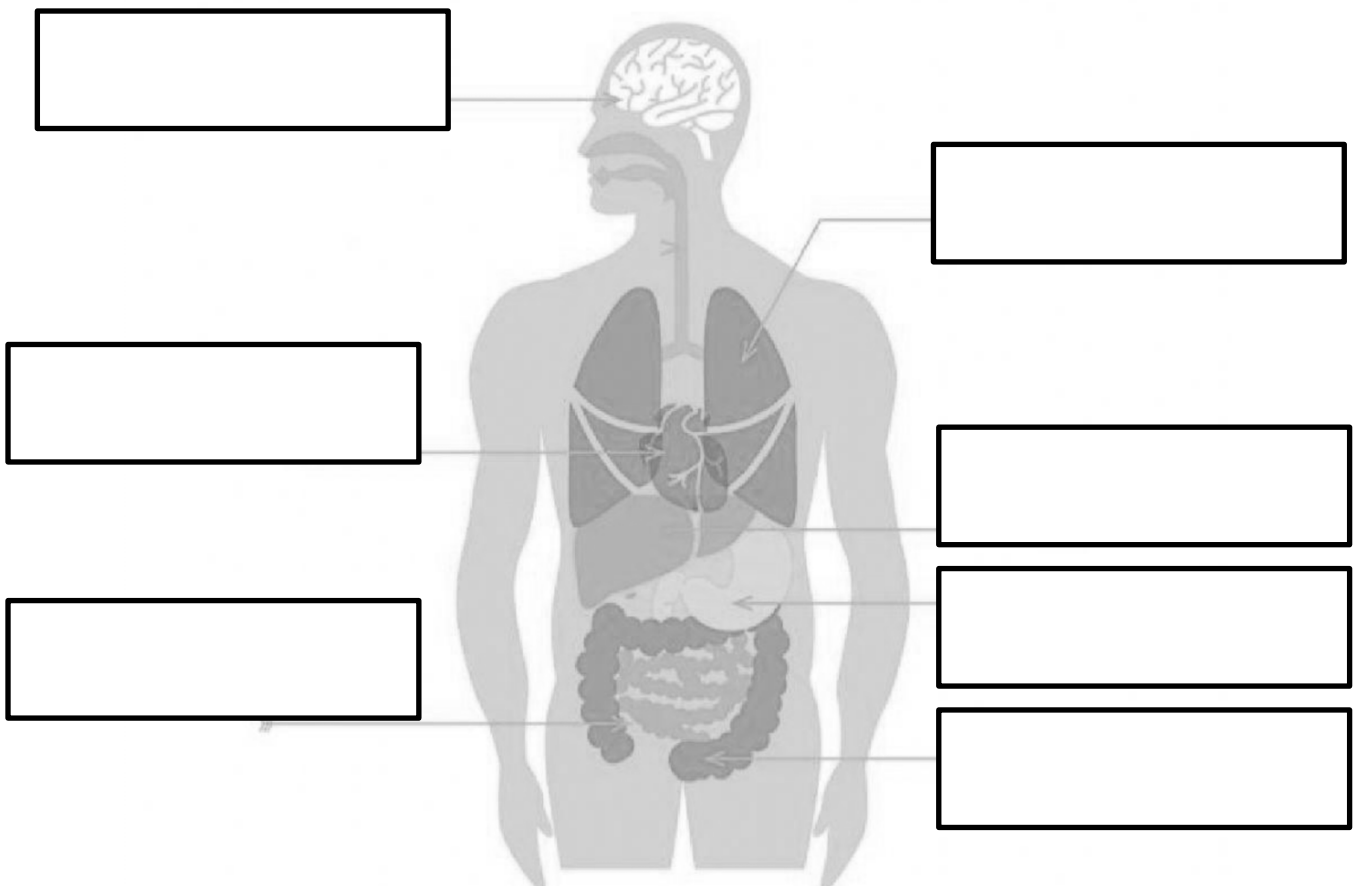


I. Complete the sentences by selecting the appropriate words from the given word bank. Write your answers on the space provided.

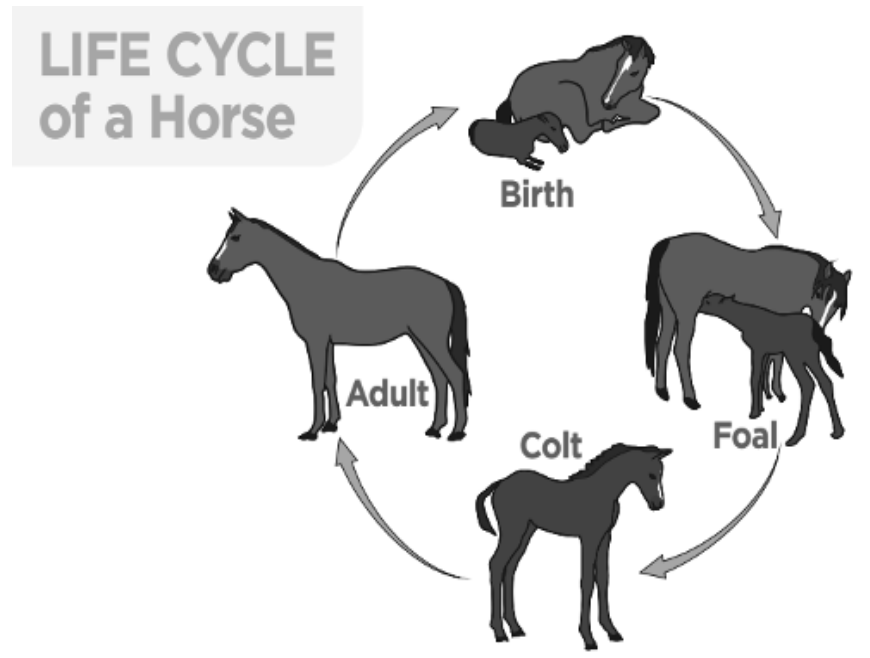
heart	stomach	brain	lungs	intestines	liver	kidney
-------	---------	-------	-------	------------	-------	--------

1. The _____ is responsible for pumping blood throughout the body.
2. When we breathe, we use our _____ to take in oxygen.
3. The _____ helps in digesting food and breaking it down into nutrients.
4. Our _____ is an essential organ that controls our thoughts and feelings.
5. The _____ are organs that help in filtering waste from our blood.
6. Food moves through the _____ during digestion, where nutrients are absorbed.
7. The _____ is a vital organ that produces bile to aid in digestion and detoxification.
8. Waste materials are removed from our body by the _____.

II. Identify and name the internal organs of the human body. Write your answers inside the box.



III. Observe the different stages of a life cycle of a horse. Answer each question referring on the picture.

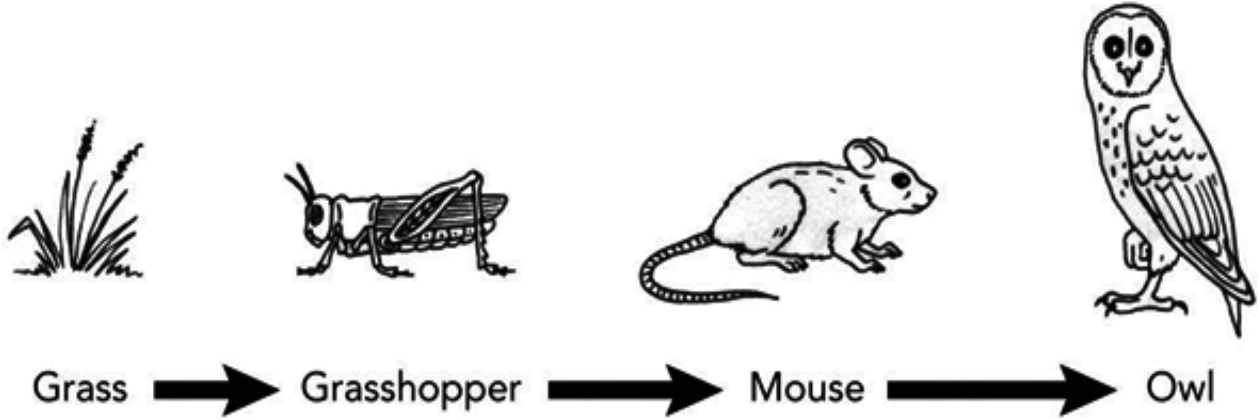


9. Why do you think each stage looks different? What purpose might these changes serve in the horse's life?

10. What animal group does a horse belong to, and can you explain why? (Vertebrates or Invertebrates?)

11. What is the name of the stage that comes after the colt? Can you describe the changes that occur during this transition?

IV. Answer the following questions, Write your answers on the blank provided.



12. Grass is an example of a producer, why are producers always are plants?

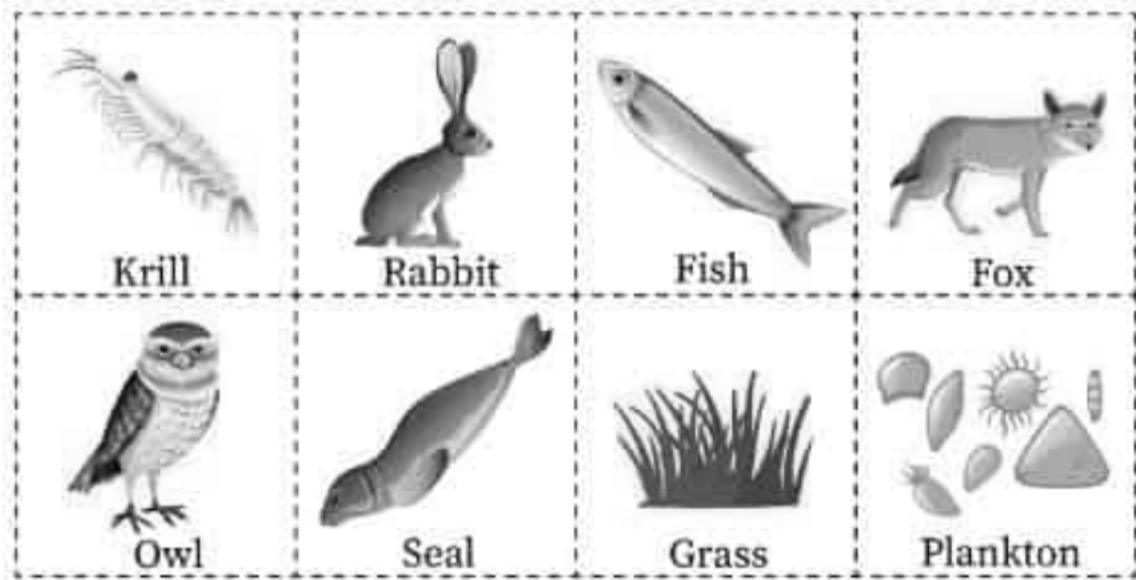
13. What is the meaning of the arrows in a food chain?

14. The snake is the predator of the mouse, and the mouse is the prey of the snake. What do the terms predator and prey mean?

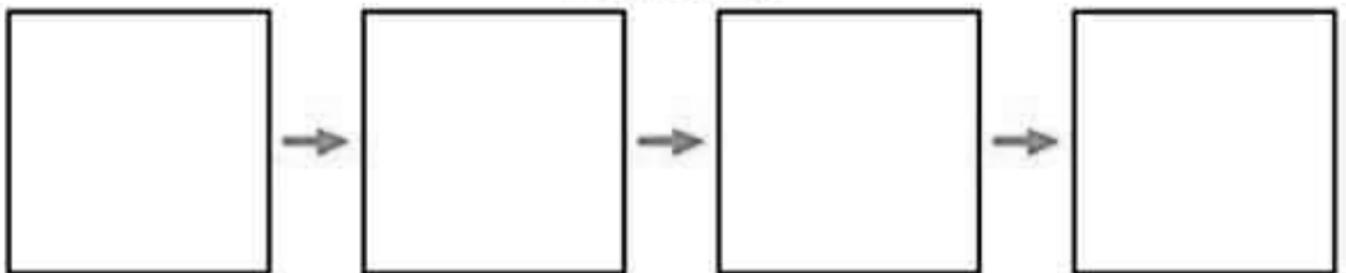
15. A mouse is a primary consumer, What do you mean by primary consumer?

16. What is missing in this food chain?

V. Create 2 food chain using these plants and animals.



IN WATER



ON LAND

