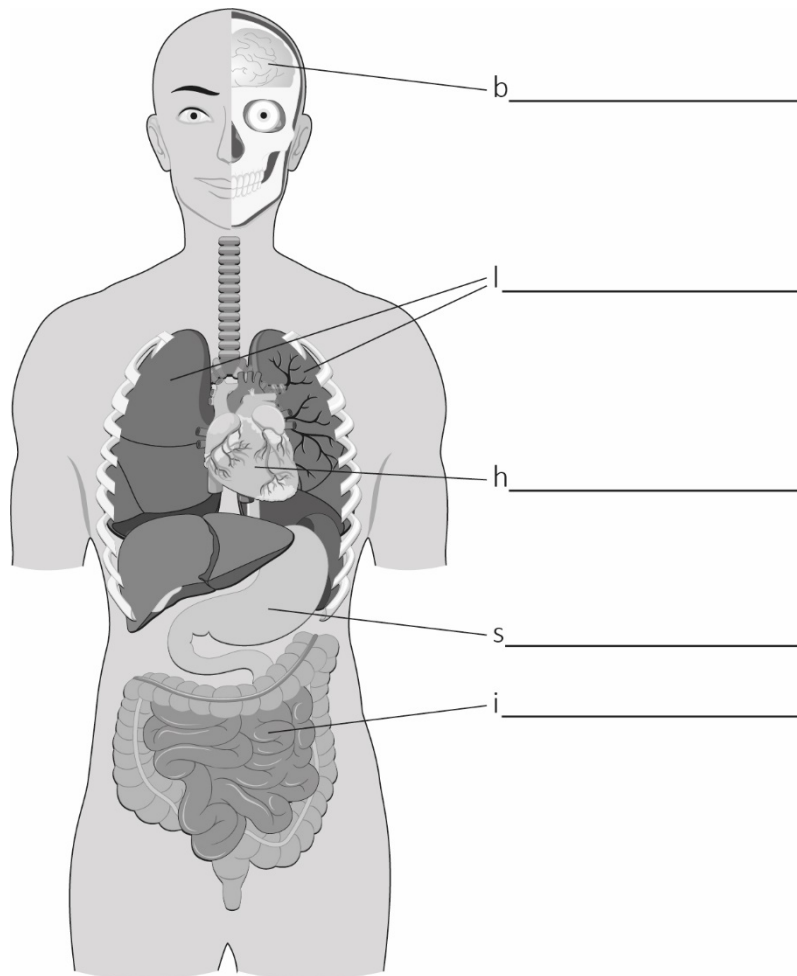


Name _____ Date _____

Worksheet 4.1A

Parts of the body

1 On the diagram below, label these parts: brain, lungs, heart, stomach and intestines.



Read each sentence and then circle either true or false.

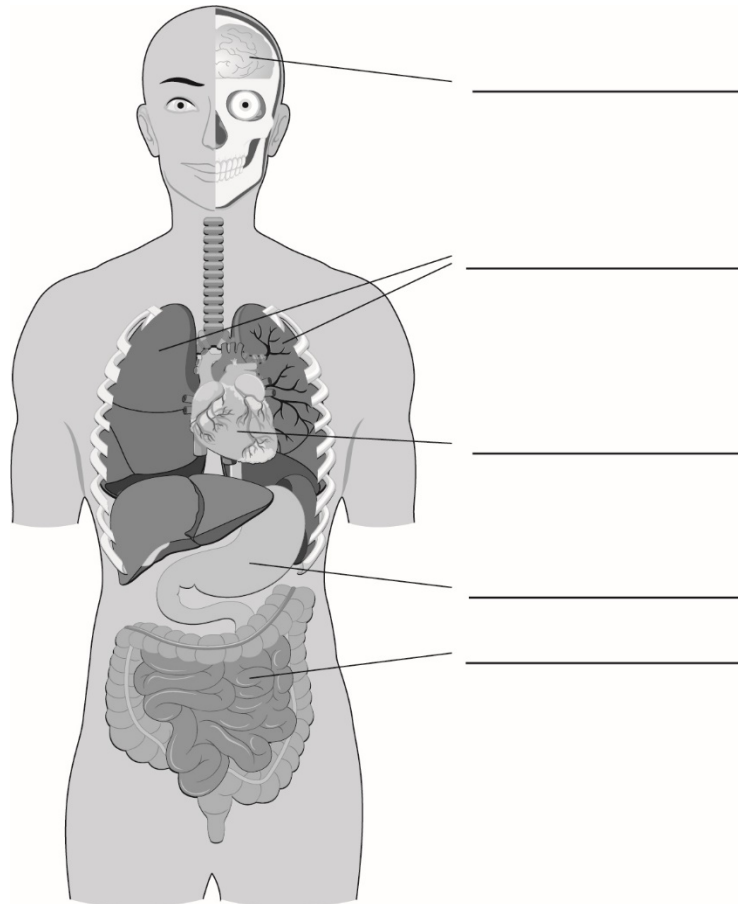
- 2 The brain is found in the chest. true / false
- 3 The lungs pump blood around your body. true / false
- 4 The lungs take in air from outside the body. true / false
- 5 Food passes through the stomach and intestines. true / false

Name _____ Date _____

Worksheet 4.1B

Parts of the body

- 1 Label the organs on the diagram below including: the brain, the lungs, the heart and the stomach and intestines.



- 2 Complete these sentences using these words

lungs head heart chest
--

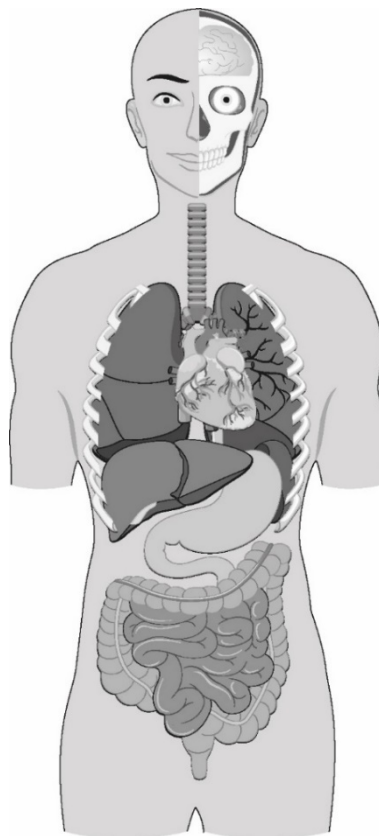
- a The brain can be found in the _____.
- b The lungs are found in the _____.
- c The heart is found in the chest between the _____.
- d The stomach and intestines are found below the lungs and _____.

Name _____ Date _____

Worksheet 4.1C

Parts of the body

- 1 Label the following organs on the diagram below: the brain, the lungs, the heart and the stomach and intestines.



- 2 Finish these sentences by writing the names of these organs in the correct space.
- a I am in your chest. I pump blood around your body. I am your _____.
 - b I am in your head. I help you do everything like talking and moving. I am your _____.
 - c We are in your chest. We help take in air so that your body can work. We are your _____.
 - d We are found below your heart. We get nutrients from your food. We are the _____ and _____.

Template 4.2

Fact bubbles

