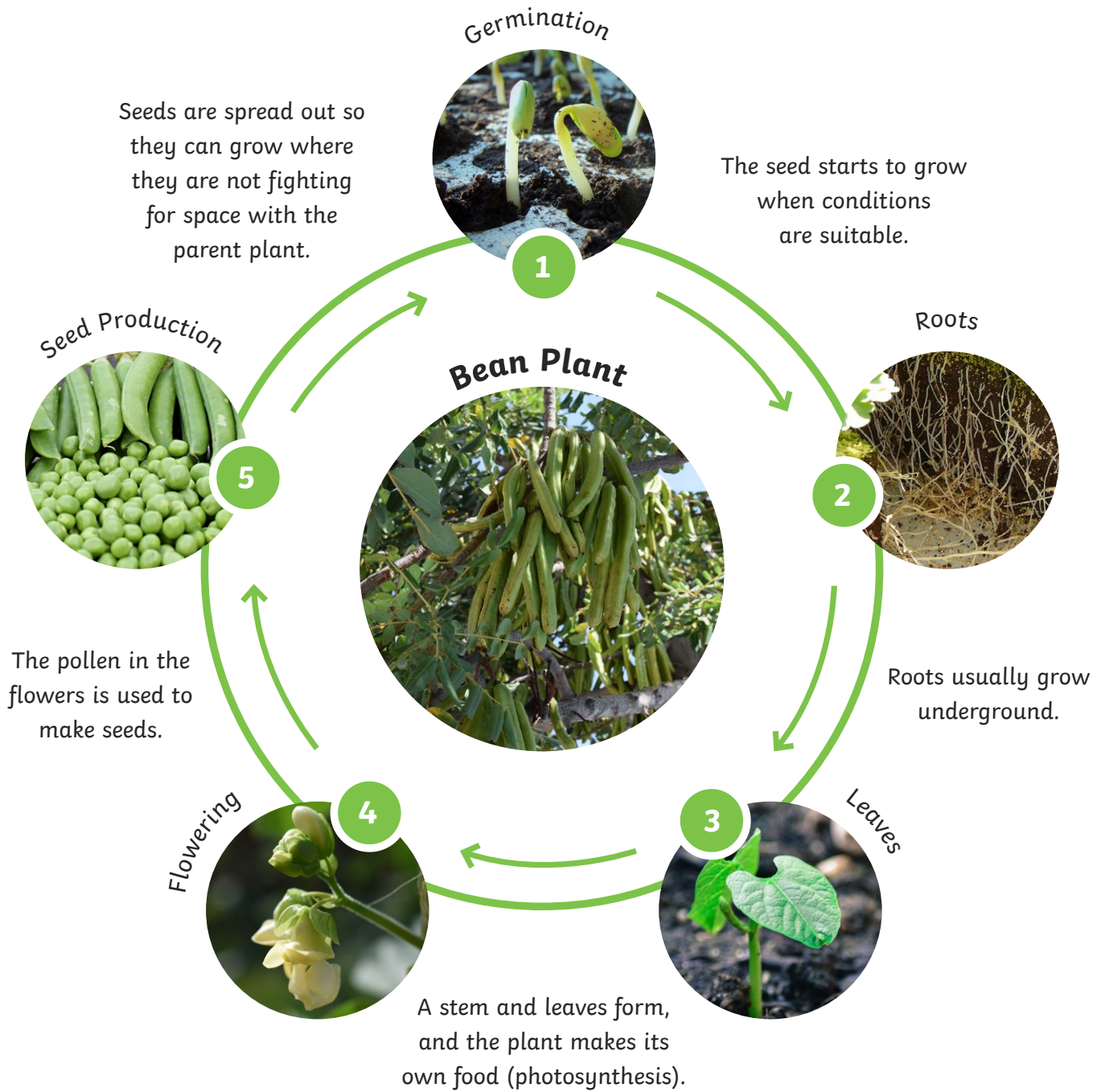


# The Flowering Plant Life Cycle



## Other Flowering Plants



# The Non-Flowering Plant Life Cycle

## Germination



Seeds are spread out so they can grow where they are not fighting for space with the parent plant.

The seed starts to grow when conditions are suitable.

1

## Roots



Roots usually grow underground.

2

## Leaves



A stem and leaves form, and the plant makes its own food (photosynthesis).

3

## Fern



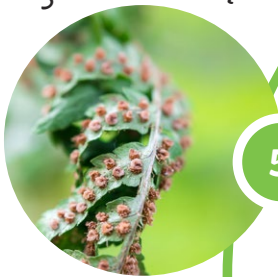
## Seed Production



Seeds are produced (without flowers)

4

## Seed Dispersal



Seeds are spread out so they can grow where they are not fighting for space with the parent plant.

5

## Other Non-Flowering Plants

### Conifer



### Ginkgo

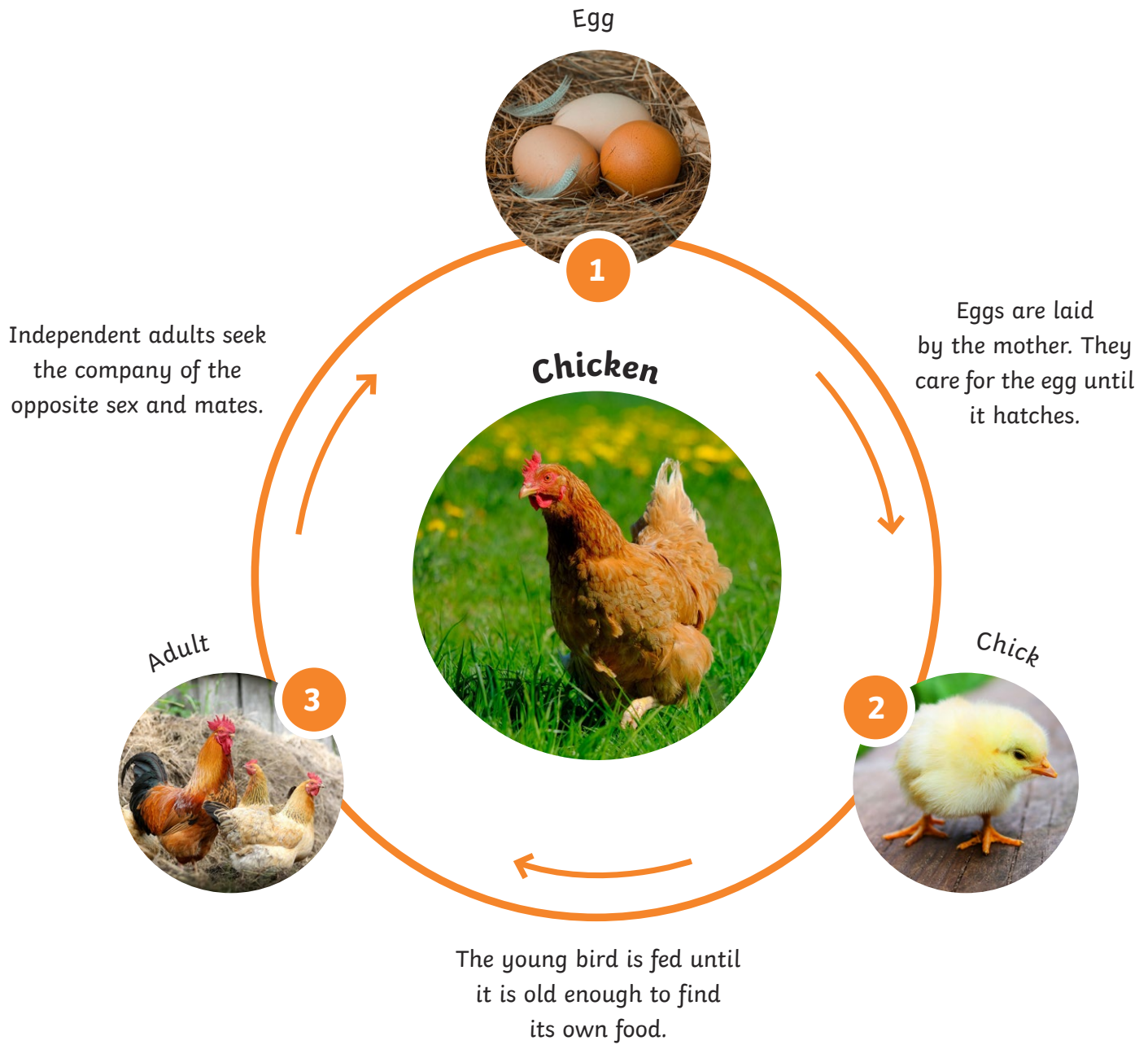


### Cycad



'Quad cones' by [smallcurio](#) is licensed under [CC BY 2.0](#)

# The Bird Life Cycle



## Other Birds

Ostrich



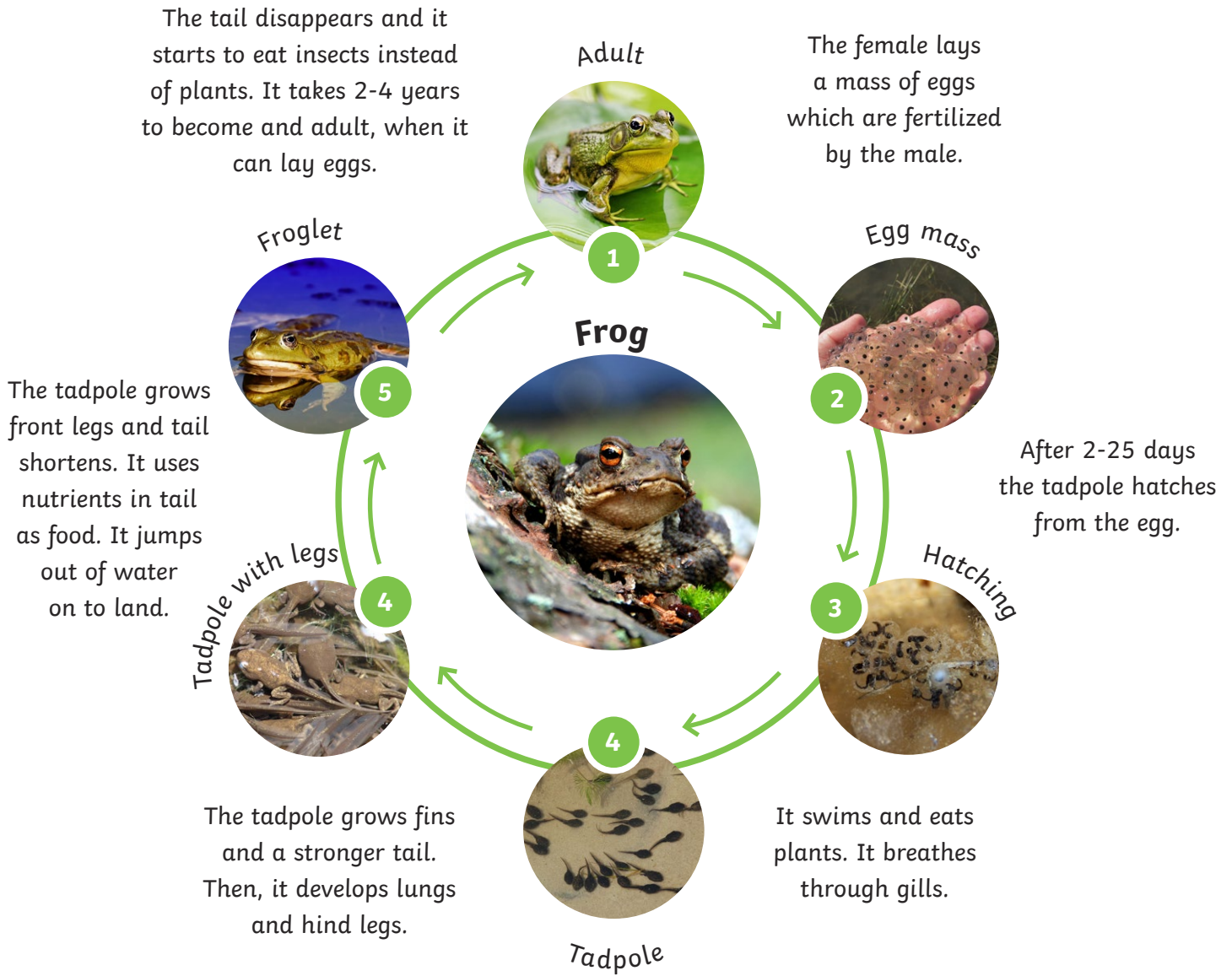
Penguin



Eagle



# The Amphibian Life Cycle



## Other Amphibians

Salamander



Toad

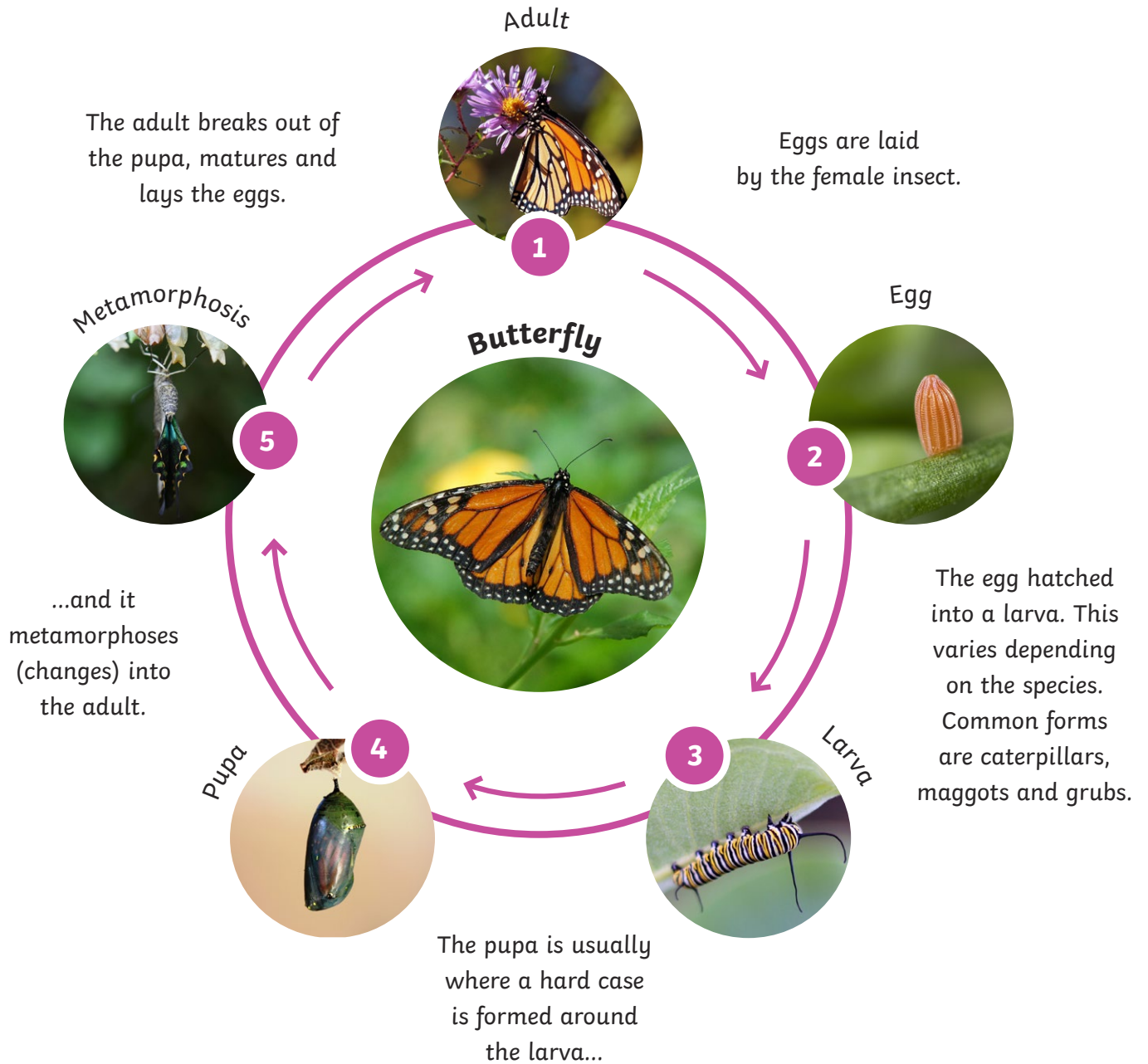


Newt



# The Insect Life Cycle

## Complete Metamorphosis

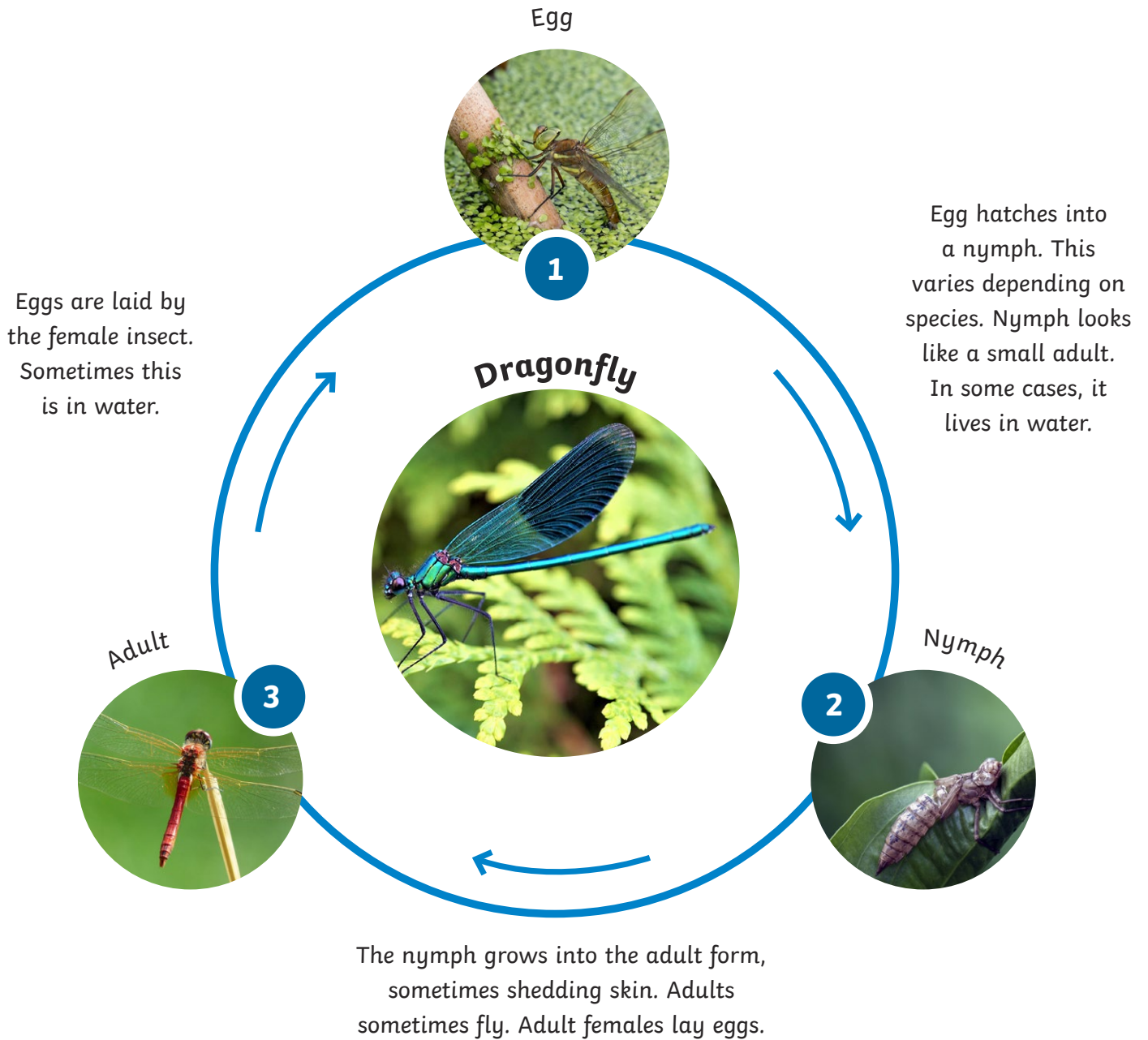


### Other Insects that Complete Metamorphosis



# The Insect Life Cycle

## Incomplete Metamorphosis

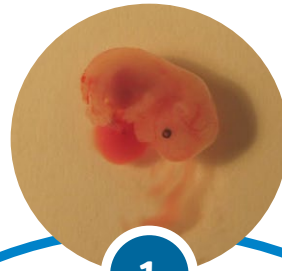


### Other Insects that Undergo Incomplete Metamorphosis



# The Mammal Cycle

Embryo



1

Embryos grow inside the mother, where it is completely reliant upon the mother.

Dogs

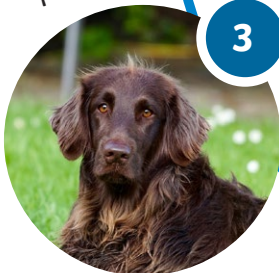


Young



2

Adult



3

Independent adult usually seeks company from the opposite sex and mates. Adult female nurses their young.

Main period of growth and developing independence from other parents.

## Other Mammals

Dolphin



Elephant



Human



'mouse embryo' by Pazit Polak is licensed under CC BY 2.0