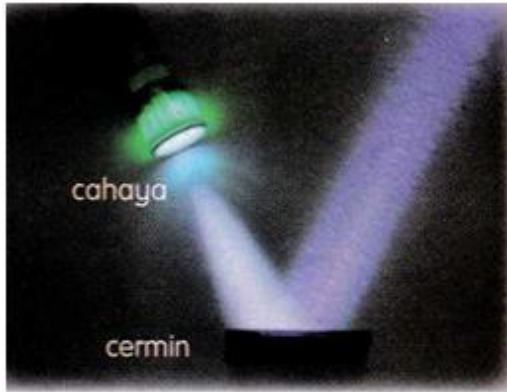


QUIZZ Worksheets**Light Reflection**

Total questions: 10

Worksheet time: 10mins

Instructor name: Devi Priya Sugathan

Name Class Date 

1.

Diagram shows a phenomenon occurs when the spotlight is directed onto a mirror surface. What is the principle of light shown in the situation?

- a) Light travels in parallel
- b) Refraction of light
- c) Reflection of light
- d) Light travels in a straight line



2.

The following diagram shows a driver who could see the image of a vehicle behind him without turning his back.

Why?

- a) Light travels in a straight line
- b) Light is refracted
- c) Light is reflected
- d) Light travels in two different mediums

3. Tick the correct of TWO devices which use the principle of light reflection in our daily lives.

a)



b)



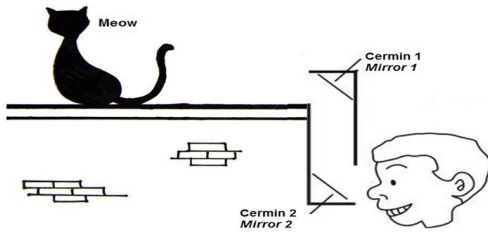
c)



d)



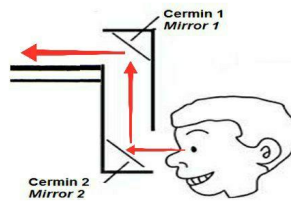
4.



Ariff is watching a cat on a wall using a periscope. Which of the following is the correct reflected ray diagram in the periscope? Tick the correct answer.

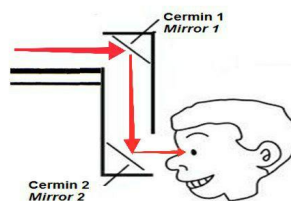
a) None

b)



c) None

d)



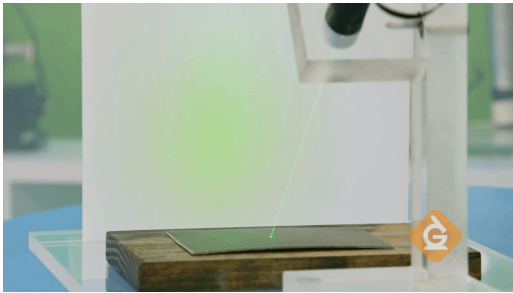
5.



How does light move?

- a) zig-zag
- b) up and down
- c) straight line
- d) scattered

6.



Which of these is the best reflector of light?

- a) carpet
- b) shiny metal
- c) white paper
- d) wood

7.

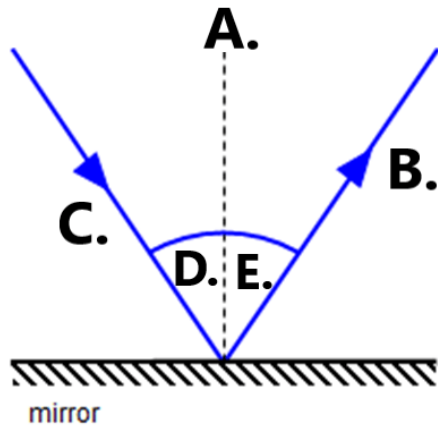


Light _____ our eyes.

- a) is produced in
- b) shoots out from
- c) enters
- d) none of these

8. When light hits an area and bounces back it is called:

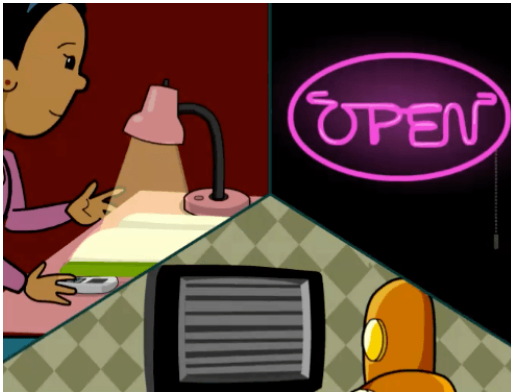
- a) reflection
- b) absorbing
- c) echo
- d) refraction



9.

In the diagram, which letter show reflected light?

- | | |
|------|------|
| a) A | b) D |
| c) C | d) B |



10.

Which of these are examples of ARTIFICIAL sources of light?

- | | |
|----------------|----------------|
| a) Televisions | b) ALL of them |
| c) Neon signs | d) Lightbulbs |