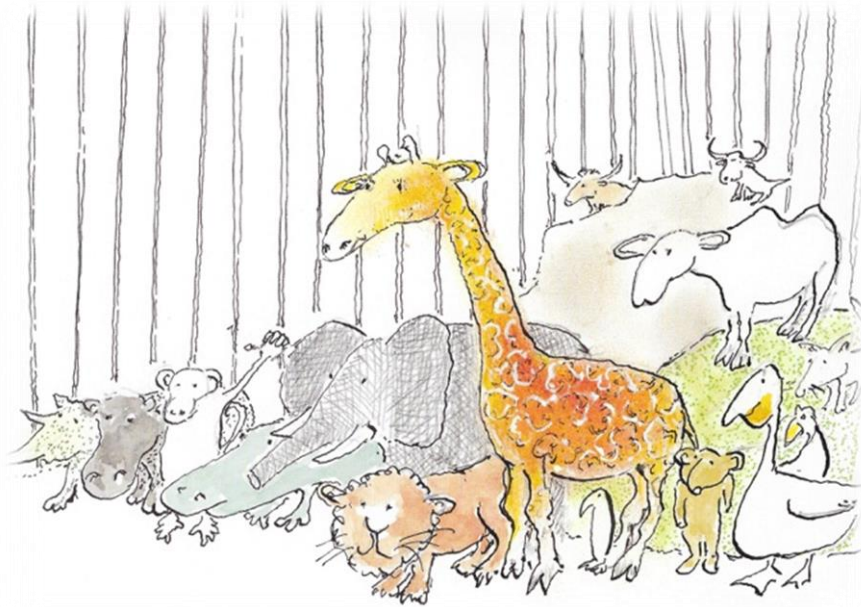


A Summary of The Way to the Zoo



Sylvie walks upstairs and jumps into bed. She sees a funny new door in her bedroom wall. The next day she goes through the door and finds a passage. Sylvie walks down the passage and sees another door. When she passes through this door she discovers that she is actually in the zoo, with lots of animals around her.

A little bear came back from the zoo with Sylvie and sleeps in her bed. Other animals arrived each day. One day Sylvie forgot to shut her bedroom door and the animals got into her sitting room. They made a big mess and Sophie gets cross. She tidied the house but her Mum still thinks the house looked like a zoo!