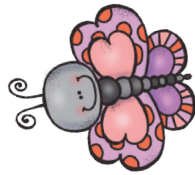
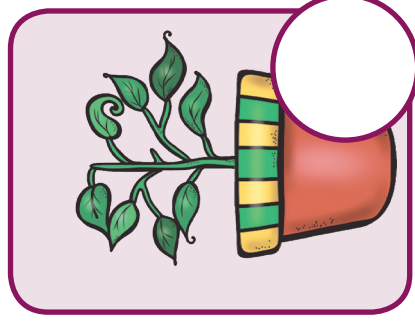
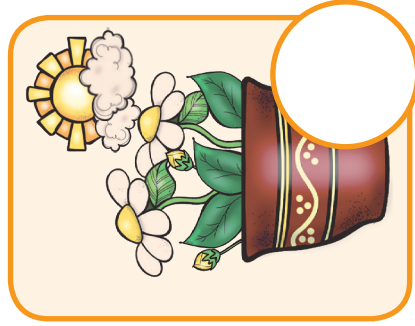
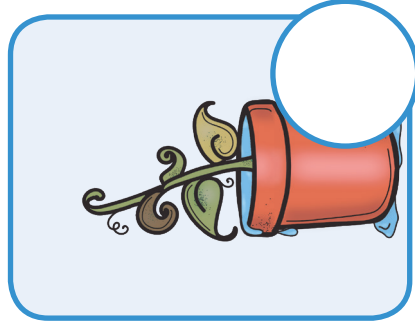
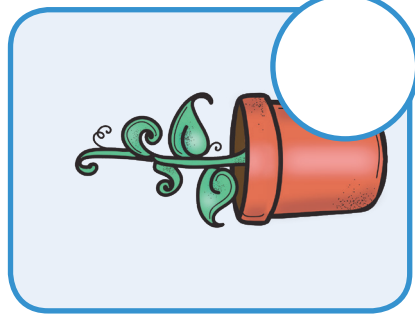


Healthy and Unhealthy Plants



Look at the pairs of plants below.

Put a **happy** or **sad face** in each circle to show whether the plant is **healthy** or **unhealthy**. Write down what you think has happened to make the plant unhealthy.



.....

.....

.....

.....

.....

.....

.....

.....

.....

.....

.....

.....

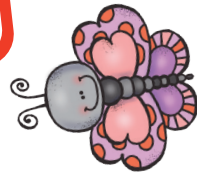
.....

.....

.....

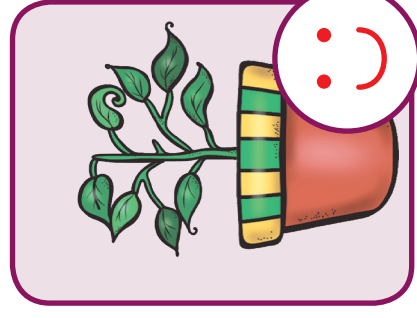
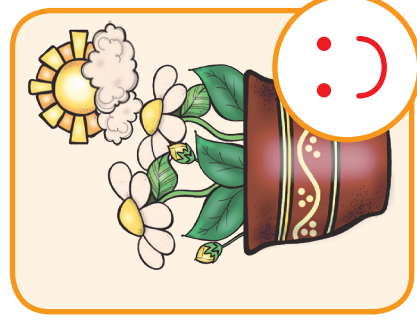
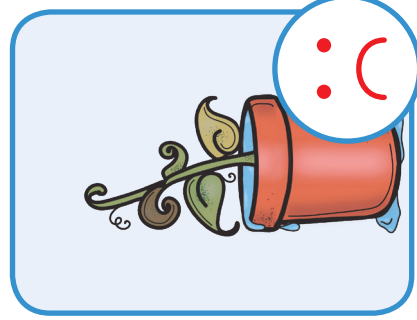
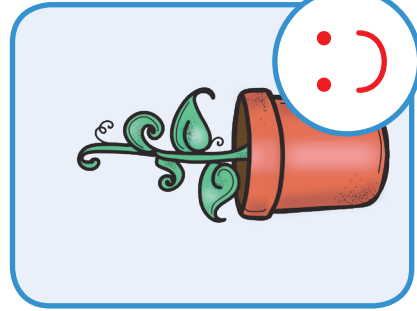
Healthy and Unhealthy Plants

Answers



Look at the pairs of plants below.

Put a **happy** or **sad face** in each circle to show whether the plant is **healthy** or **unhealthy**. Write down what you think has happened to make the plant unhealthy.



The plant has been.....
 given too much water.....

It is too hot for this.....
 plant. / This plant.....
 needs to be watered.....

The pot is too small. The.....
 roots do not have enough.....
 space. Also there is not much
 soil so the plant cannot get
 enough nutrients.....